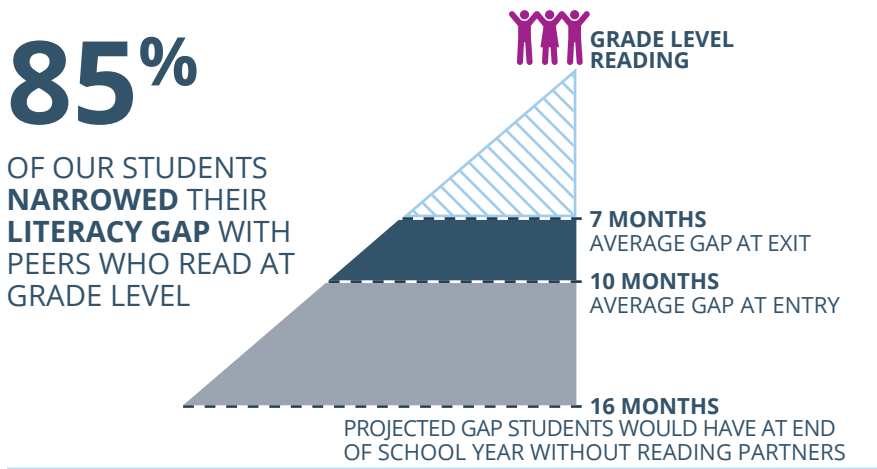
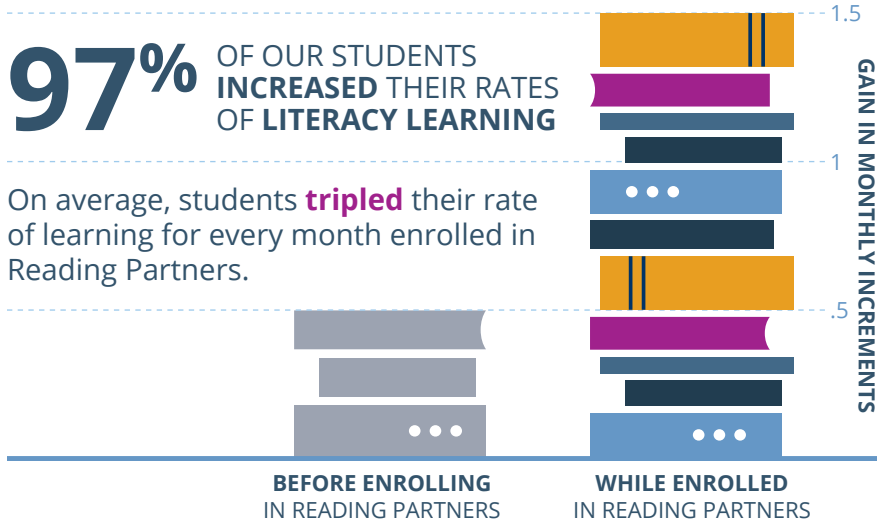




readingpartners

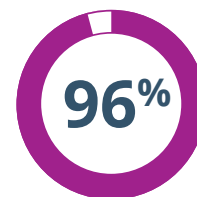
# TULSA IMPACT REPORT 2014-15



of students who were rated by their classroom teachers as having low to very low confidence **increased their confidence level** by year's end



of principals responding reported **improved reading progress** school-wide



of volunteers responding were **satisfied with their experience** with Reading Partners

**838**  
STUDENTS SERVED

**15**  
PARTNER SCHOOLS

**1,372**  
WEEKLY VOLUNTEERS

**22,205**  
HOURS OF TUTORING